



LIVE LIMITLESS

STEP INTO YOUR OWN

PRIVATE RESORT WITH LIMITLESS POSSIBILITIES

EXOTIC WEEKEND VILLAS :

FUSING ARCHITECTURE, NATURE & LIFESTYLE IN HARMONY



MODERN, CONTEMPORARY DESIGN

ELEVATE YOUR LIFE STYLE WITH UNIQUE
AND ONE OF A KIND ARCHITECTURE



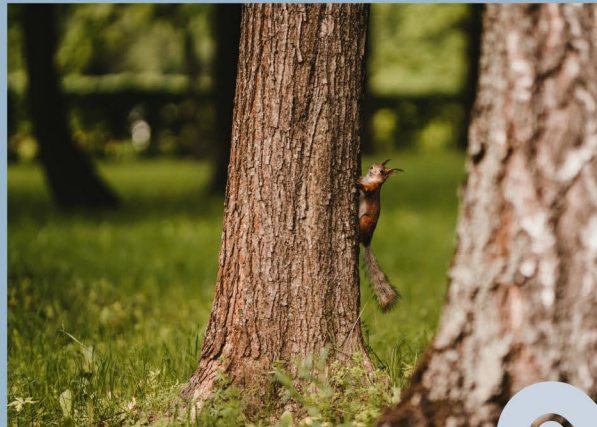
LIVE
LIMITLESS

GRANDEUR
REDEFINED



PLOT SIZES FROM 700 SQ. YARDS

FEEL THE
BLISS OF
NATURE,
LIMITLESS



OPEN AIRLIGHT DESIGN



Lily pond



Common plot



Sustainable design



Wide RCC roads



LIVE
LIMITLESS



Artistic Impression

SIMPLE, UNIQUE AND ELEGANT

26 Luxury villas by Palm Greens reflect the ethos that inspired us to design these unique homes for you. Its simplistic yet elegant design, surrounded by greenery, equipped with all the comfort your heart desires, makes your home the perfect weekend getaway.

BE PART OF A NEW TREND



Artistic Impression

CREATE MEMORIES LIMITLESS

SPACES THAT GIVE LIBERTY
TO SOCIALIZE YOUR WAY



Sunken sit-out



Open design concept



Gazebo inspired Entertainment zone



Landscaped garden





Artistic Impression

SETTING THE MOOD FOR ALL THINGS NICE

Spend time with your friends and family over a cup of coffee or sit together to watch the Sun set. The line between interior and exterior blurs easily with unhindered access to the landscape throughout the day. Being so close to a natural setting is sure to bring out the best in you.

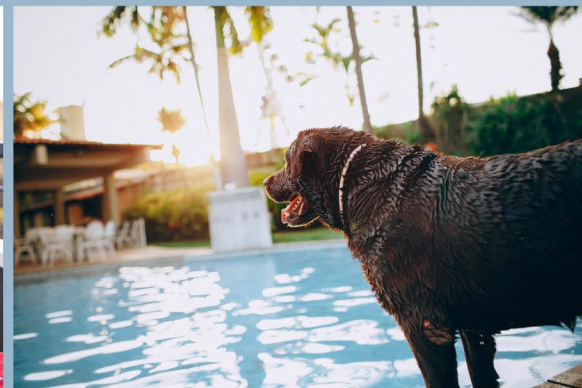
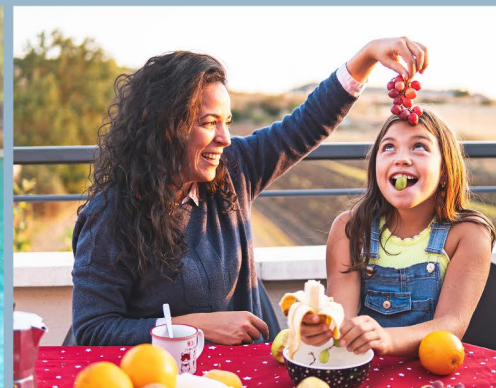
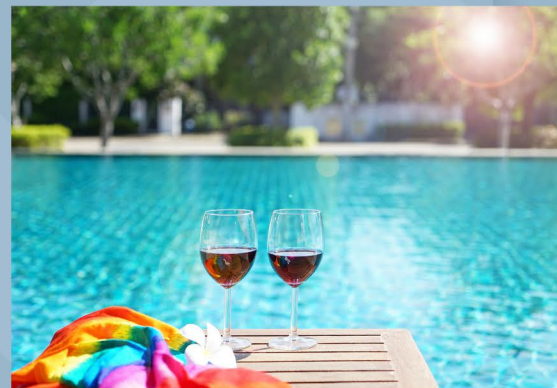
RADIANT SPACES



Artistic Impression

REFRESH LIMITLESS

REDISCOVER YOURSELF AT YOUR OWN
PRIVATE POOL & HUGE NATURAL SPACES



Swimming pool



Hassle free maintenance



Private parking space



24x7 Security and CCTV



LIVE
LIMITLESS



Artistic Impression

LIVE ALONG SIDE REFRESHING BLUES AND LUSH GREENS

The pool is not any other amenity in your villa but an integral part of your every day routine. Set in the comforts of your courtyard, it sets your morning mood rolling. Get refreshed with a jump into the pool from your bedroom or choose a lazy afternoon dip. Create memories bonding over a cup of tea or coffee, watching the sun set, being mesmerized by the positive atmosphere.

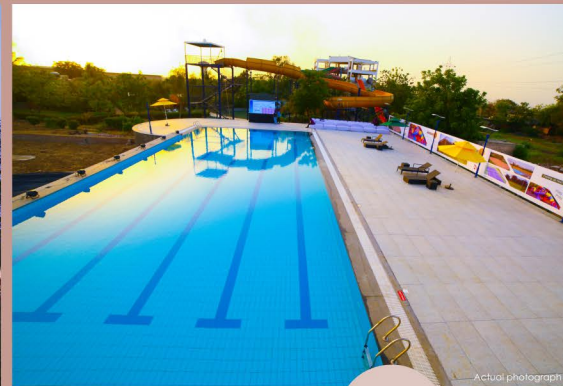
REFRESHING SPACES



Artistic Impression

ACCESS TO CLUB LIFE, LIMITLESS

STEP OUT INTO A WORLD OF FUN AND CELEBRATION



3 Stars acclaimed



Fully operational Club



Amenities spread over 40 Acres



20+ facilities

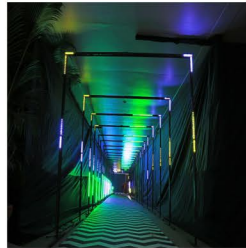


LIVE
LIMITLESS



GUJARAT'S FASTEST GROWING CLUB RESORT AND WEDDING DESTINATION - PALM GREENS CLUB

40 Acres of Prime Property, bang on India's busiest highway N.H. 8



Formal or informal, there's no limit to celebrating any occasion

- CAFÉ
- RESTAURANT
- BANQUET
- DISCOTHEQUE
- AMPHITHEATER
- NATURAL LAKE
- SWIMMING POOL
- WATER PARK
- KIDS' WATER RIDES
- TENNIS COURTS
- BADMINTON COURTS
- BASKETBALL COURT
- CRICKET NETS
- VOLLEYBALL COURT
- TABLE TENNIS
- CARROM
- SNOOKER

Celebration : One day picnics | Birthday parties | Kittle parties | Get togethers | Corporate conferences | Corporate outings

Destination Weddings : Mehendi | Mangalik prasang | Haldi | Sangeet | Wedding | Reception

Actual photographs

The Courtyard as the name suggests comprises of a common courtyard lawn in the center of the project. Also each villa comprises of two courtyards inside the villa for a perfect seamless experience with the natural environment.

Within a colossal setting of green and unhindered space, set in 24000 sq. yards, with massive plot sizes ranging from 700 sq. yards to 1200 sq. yards, all 26 villa homes sit comfortably side by side. Access the common plot, lily pond from any corner. The entry points, the parking area; everything has been designed meticulously to let you enjoy the lavishness of your home.

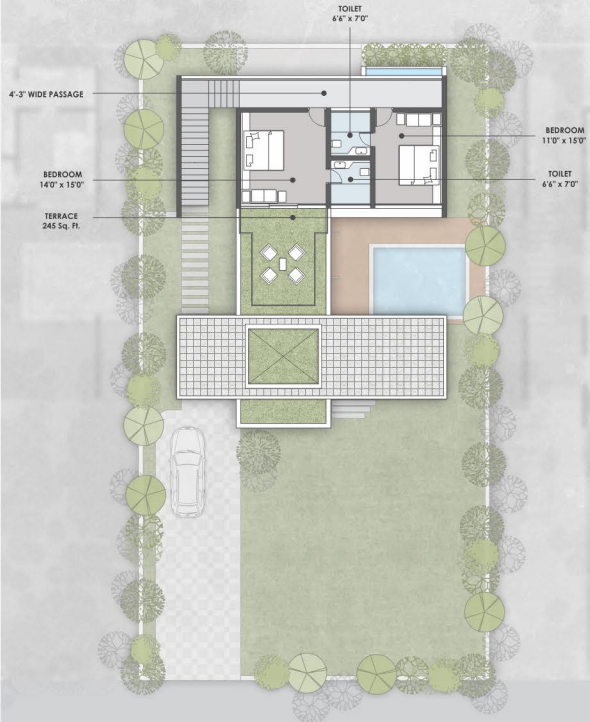


GROUND FLOOR



12 m (39.5 ft.) Wide Road

FIRST FLOOR



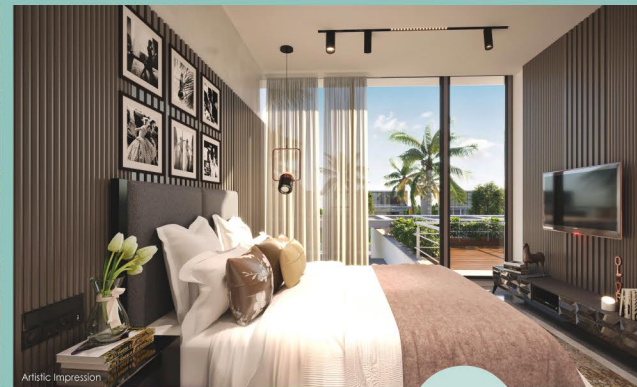
VALUABLE RETURNS

The Courtyard - your dream villa home shall not be just your ordinary investment. The moments made, the time spent and cherished shall be unmatched and invaluable, making it as a perfect return on your investment.

POSH AND SOPHISTICATED

RELAX AND REVITALIZE, LIMITLESS

PRISTINE VIEWS OF POOL
AND LAWN FROM ROOMS
AND COMMON SPACES



SPECIFICATIONS



Flooring
Vitrified tiles/Stone flooring in living, dining, kitchen and all bedrooms.



Windows
Powder coated, aluminum section windows with glass.



Staircase
Granite top MS staircase with MS railing.



Doors
Main door with veneer finish in flush door. Other doors with flush door and laminate finish.



Paints and Finish
Primer coat on internal walls, texture & weather resistant paint as per specification from Architect.



Kitchen
Granite kitchen platform with S.S. sink and designer wall tiles.



Electrification
Branded ISI concealed copper wiring with modular switches, MCB distribution panel.



Sewage Treatment Plant
Waste water treatment plant installation to reuse water for better sustainability and greener living space



Toilets
Designer wall tiles as per Architect's design and specifications branded C.P. fittings and sanitary vessels.

Architect & Landscape



Structural design



MEP Consultant



Green partner



Designed by



Disclaimer : Photographs/ artistic impressions contained herein are illustrative and used for indicative purpose only. This is purely conceptual and not legal offering. No warranty either expressly or impliedly given that the completed development of the project will comply in any degree with such artistic impression depicted herein.



PRIME LOCATION

TO AIRPORT 45 minutes

TO AHMEDABAD 25 minutes

TO NADIAD 25 minutes

TO ANAND 40 minutes

The Courtyard

Nr. Palm Greens Club & Resort, Near Bareja, N.H. No.8, Bareja-Kheda highway, Goblej, Ahmedabad 382 425

M : +91 75673 61850 | E : sales.dabuildcon@gmail.com

DEVELOPER

